

ABOUT ON-DEMAND SERVICE

On-Demand will be MARTA's new shared ride service offering local trips within zones in the MARTA service area. The service is open to the general public and is part of MARTA's family of services, designed to work with local bus service as part of the NextGen Bus Network Redesign. On-Demand will help reduce both walking and waiting times for patrons. Because On-Demand is a ridesharing service, other passengers may be picked up or dropped off during your trip. Below are some features of MARTA's On-Demand service:

- Users can request a ride using an app, computer, or by calling MARTA.
- The service can be for short local trips within designated zones. For longer trips, the service will connect users to traditional fixed route.
- On-Demand is meant to better connect areas not easily served by local bus service.
- The wait time for pickup from your request is about 30 minutes. Some trips may be scheduled in advance.

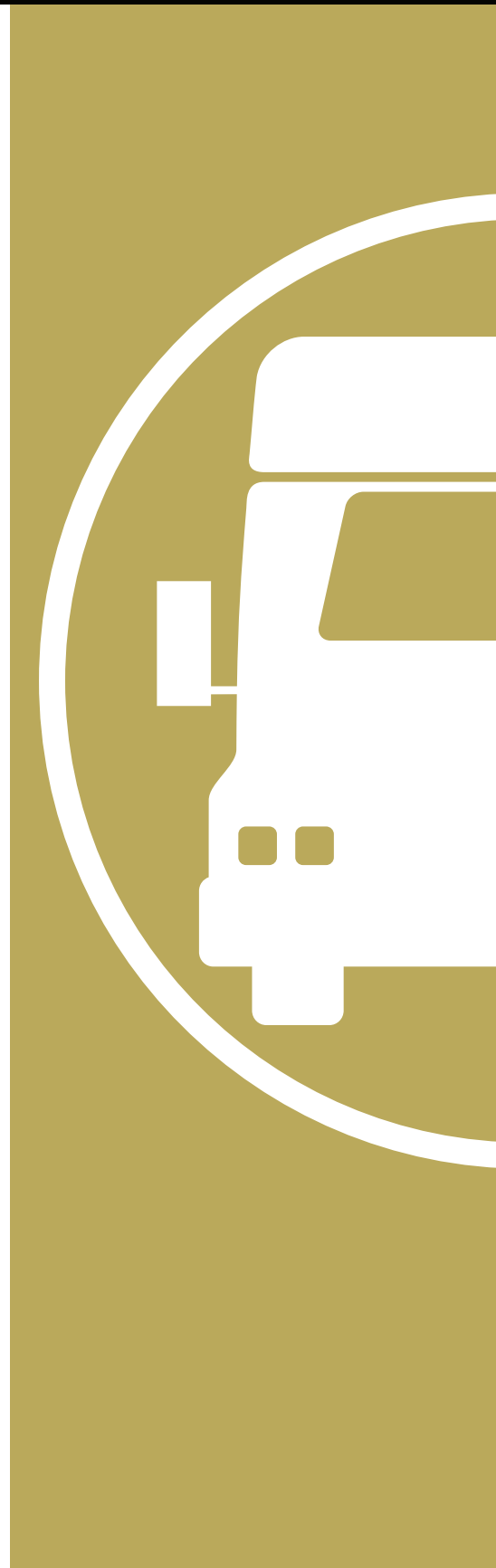
PROPOSED ZONE SUMMARY

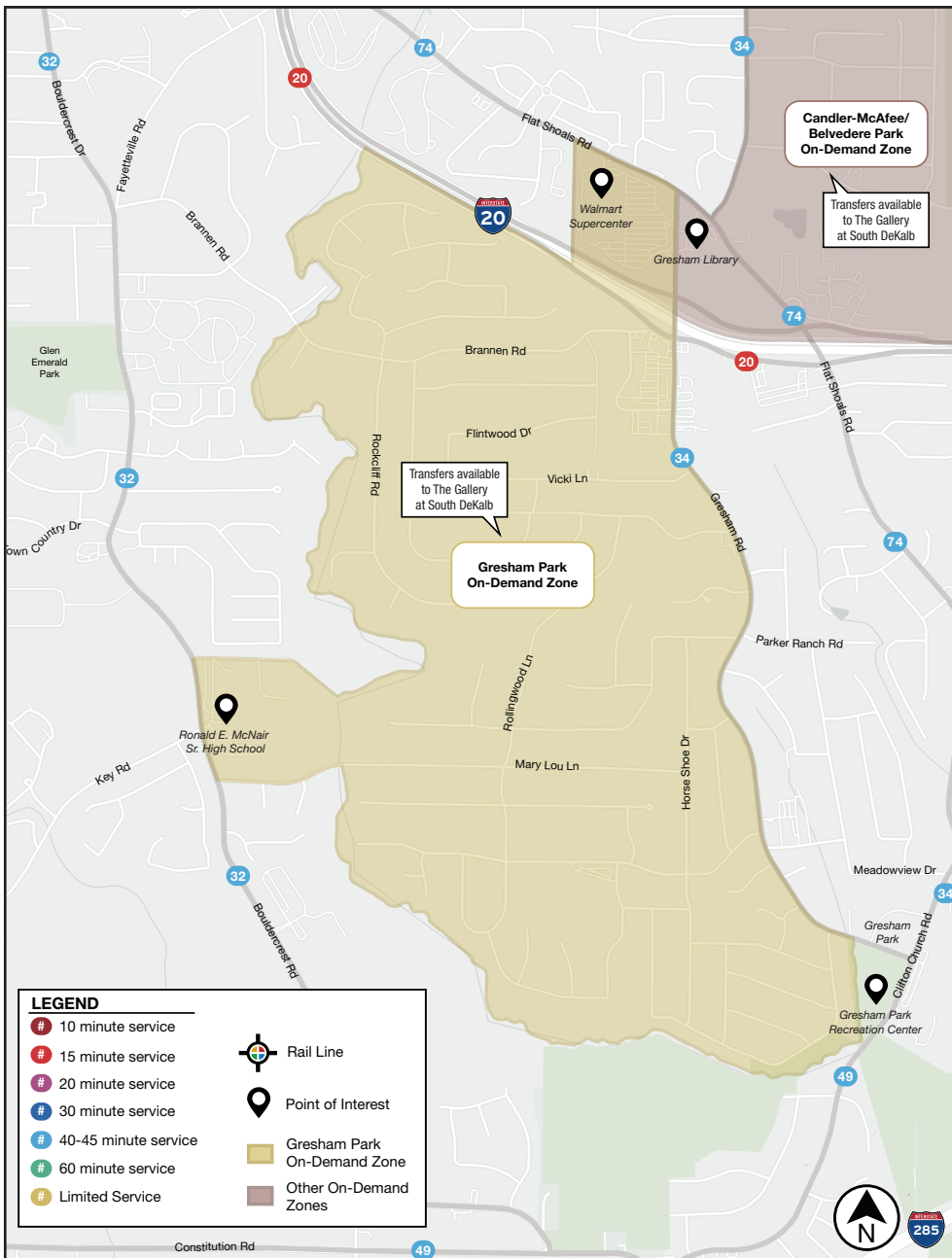
The Gresham Park Zone generally covers areas west of Gresham Rd., as shown on the map. It provides service to discontinued portions of Routes 9 and 34.

HOURS OF OPERATION*

MONDAY-FRIDAY	SATURDAY-SUNDAY-HOLIDAYS
5 AM - 11 PM	6 AM - 12 AM

**Hours of operation are estimated and subject to change.*





KEY DESTINATIONS SERVED

- Gresham Library
- Ronald E. McNair Sr. High School
- Walmart Supercenter



PROVIDE FEEDBACK

Share your thoughts on the proposed NextGen Bus Network Redesign at www.MARTANextGenBusNetwork.com.

PROPOSED CONNECTIONS

BUS

15, 20, 32, 34, 49, 74, 109, 111

ON-DEMAND SERVICE

Candler-McAfee/Belvedere Park, Cedar Grove (via The Gallery at South DeKalb)

OTHER SERVICE CONNECTIONS

The Gallery at South DeKalb